

WELCOME



YEAR 2 SATS MAY 2020

AIMS

An overview of the
Key Stage 1 Statutory Assessments
(SATS)
for Year 2 children.

How we teach the subjects that are
assessed.

How you can help support your child
at home.

WHAT ARE STATUTORY ASSESSMENTS? WHICH SUBJECTS ARE ASSESSED?

A combination of tests and teacher assessments in Reading, GPS, Maths & Science when children are in Year 2.

Teachers continually assess these subjects throughout the year.

Tests take place in Reading and Maths in May to support the end of year teacher assessment judgements.

HOW READING IS TAUGHT IN SCHOOL

We provide opportunities for children to read everyday through: whole class reading, paired reading and reading aloud individually.

We use VIPERS to teach reading comprehension strategies: Vocabulary, Infer, Predict, Explain, Retrieve and Sequence. They have 2 VIPERS lessons each week and they are also taught during Read Write Perform.

HOW READING IS ASSESSED

In May teachers make a judgement as to whether your child has attained the expected standard in line with the Year 2 National Curriculum for English.

Teachers use information from on-going teacher assessment in addition to the score your child achieves in the reading tests.

Test 1

The text and questions are on the same page
There are 20 questions based upon a narrative
(approximately 30 mins).

Test 2

The text and answer booklet are separate
There are 18 questions based upon 2 different texts
(approximately 40 mins).

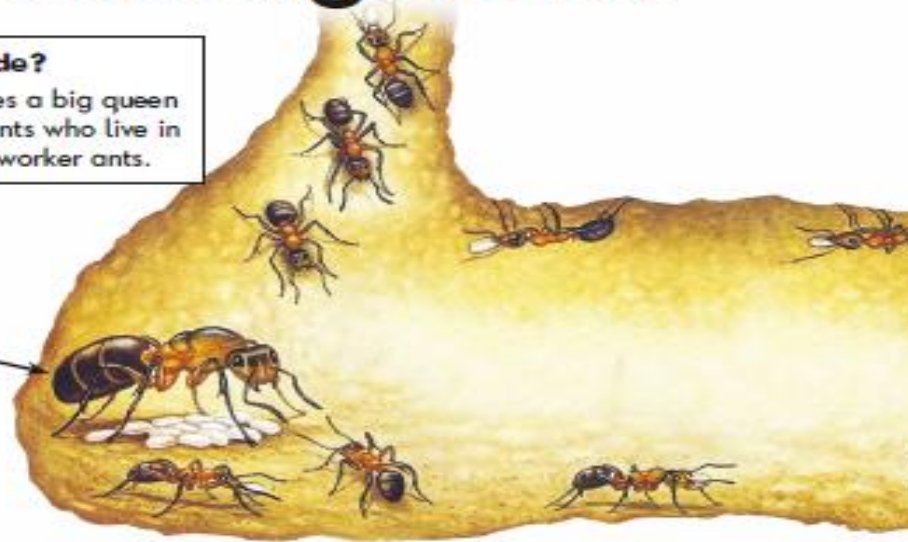
Ants underground

Who lives inside?

Inside the nest lives a big queen ant. Most of the ants who live in the nest are busy worker ants.

Queen ant

The queen ant spends all her time laying eggs.



2

What does the queen ant do?

Tick one.

keeps the nest clean

lays eggs

moves eggs

finds food

When they woke up the sun had nearly disappeared.

"Our boat has drifted off!" said Frog.
"This adventure gets better and better!" he said. "Cast away on a desert island!"

"I wish I had never come on this adventure," said Monster, almost in tears.

"Don't worry, old friend," said Frog.
"I will think of something."

- 15** How can you tell that it was late when *Monster* and *Frog* woke up?

- 16** How did *Monster* feel when he woke up?

Tick **one**.

cheerful

tired

bored

upset

HOW CAN I HELP MY CHILD WITH READING AT HOME?

Listen to your child read aloud regularly and question them about their understanding.

What does the queen ant do?

It is important children are able to use the skill of inference.

How can you tell that it was late when monster and frog woke up?

How did monster feel when he woke up?

VIPERS booklets will be sent home tomorrow with your children with some question ideas to further support your child at home.

HOW WRITING IS ASSESSED

Writing is teacher assessed throughout the year.

In May, teachers make a judgement as to whether your child has attained the expected standard in line with the Year 2 National Curriculum for English

HOW SCIENCE IS ASSESSED

Science is teacher assessed throughout the year.

In May, teachers make a judgement as to whether your child has attained the expected standard in line with the Year 2 National Curriculum for Science.

HOW MATHS IS TAUGHT IN SCHOOL

We use the following approaches:

Concrete: Use of mathematical equipment

Pictorial: Use of diagrams or pictures

Abstract: Application of their knowledge
e.g. use of numerals

We use this approach to develop critical thinking and problem solving skills and a deeper understanding

HOW MATHS IS ASSESSED

In May, teachers make a judgement as to whether your child has attained the expected standard in line with the Year 2 National Curriculum for maths.

Teachers use information from on-going teacher assessment that happens all year in addition to the score your child achieves in the maths tests.

Arithmetic Test

20 minutes duration

Pupils can't use a ruler or any other counting equipment

Mathematical Reasoning Test

35 minutes duration

Includes 5 oral questions

Pupils may use a ruler

ARITHMETIC

$5 + 7 =$

$15 + 3 + 3 =$

$89 + 10 =$

$\underline{\quad} + 5 = 9$

$36 + 24 =$

$19 - 9 =$

$39 - 8 =$

$87 - 40 =$

$50 - \underline{\quad} = 20$

$96 - 42 =$

$8 \times 10 =$

$2 \times 0 =$

$3 \times 3 =$

$\frac{1}{2} \text{ of } 30$

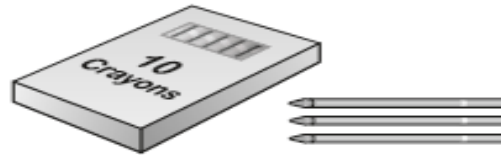
$\frac{1}{4} \text{ of } 20$

$\frac{3}{4} \text{ of } 40$

REASONING

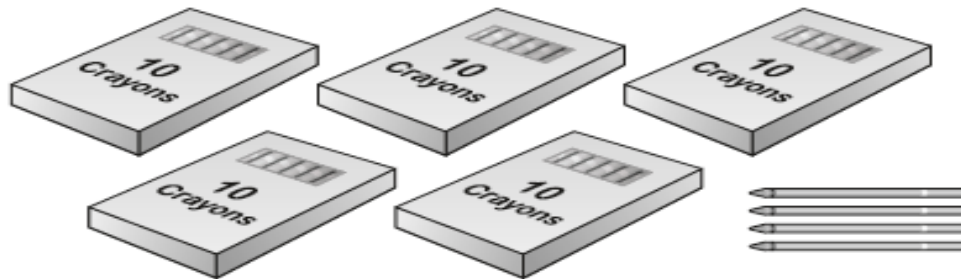
13

Ben has 13 crayons.



Here are Abdul's crayons.

How many crayons does Abdul have?



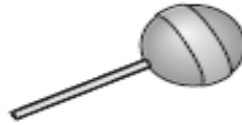
crayons

15

A shop sells these sweets.



2p



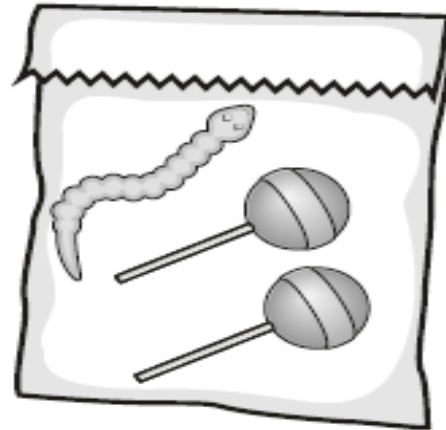
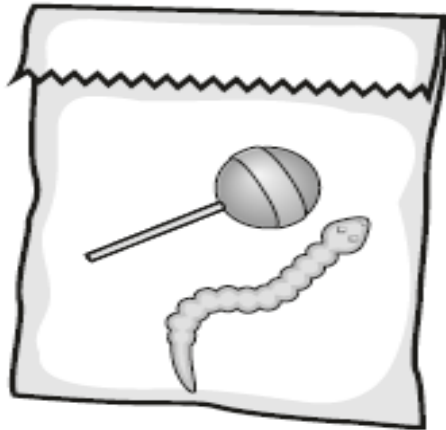
5p



10p

Abdul spends exactly **20p** on sweets.

Tick (✓) the bag of sweets he buys.



HOW CAN I HELP MY CHILD WITH MATHS AT HOME?

Practise counting forwards and backwards in ones and tens

Practise rapid recall of number bonds up to 20

Practise 2x, 3x, 5x and 10x tables

Practise telling the time to 5 minute intervals

GRAMMAR, PUNCTUATION & SPELLING (GPS)

Test was published for use in May 2016
then abolished.

Schools have the option of whether pupils
complete the test in May 2020.

Pupils will complete the test in May 2020 as
it helps teachers make a teacher
assessment judgement as to whether your
child has attained the expected standard
in line with the Year 2 National Curriculum
for English

HOW GPS IS TAUGHT IN SCHOOL

Grammar and punctuation are taught across the curriculum as part of reading and writing skills. It is important to learn about these concepts by seeing them and using them in context.

Spelling is taught for 30mins 3 x weekly. They are taught spelling rules and the Year 1 and 2 common exception words.

Pupils are encouraged to apply the skills they have been taught across the curriculum.

HOW GPS IS ASSESSED

A 20 minute test consisting of 18 questions on grammar and punctuation.

A spelling test of 20 words.

Read the sentences below.

Growing Beans

Place some damp cotton wool in a jar.

Push a bean seed down against the side of the jar.

Wait for the bean seed to sprout.

Tick the word that best describes these sentences.

Tick **one**.

statements

questions

commands

exclamations

Look at where the arrow is pointing.

The children went home Josh had enjoyed his party.



Which punctuation mark is missing?

Tick **one**.

comma

question mark

apostrophe

full stop

Circle the **verbs** in the sentence below.

Yesterday was the school sports day and Jo wore her
new running shoes.

HOW CAN I HELP MY CHILD WITH GPS AT HOME?

Parents will soon be able to purchase a reference book that details spelling rules and vocabulary and grammar children need to know.

Talk about punctuation when reading and writing.

Ask your child questions:

What type of word do we use to describe something?

What sort of sentence is this?

Finally...

We hope you now have a clearer understanding of

The Key Stage 1 Statutory Assessments (SATs) for
Year 2 children.

How we teach the subjects that are assessed.

Some practical ways to support your child's learning
at home.

Tomorrow, your child will also be sent home with an
order form for any revision books you wish to
purchase in order to further support your child at
home.

Any Questions?