

# Year 1 Autumn 1

Welcome back!

We hope you have had a fun summer and are ready for all the exciting things ahead this half term!

**Staff:** Miss Woolley Mrs Evans, Miss Plummer, Miss Manley

## **Reminders:**

**PE is on Thursday and Friday each week for both Yew and Beech class.**

**Forest School is every Monday.**

**Please come to school in PE kit and Forest School clothes on these days and remove or cover earrings with plasters.**

If you need to speak to your child's class teacher for any reason, please make contact via the year group emails.

These are checked on a daily basis after school and will be responded to as soon as possible. The year 1 email address is [year1a@westfield.staffs.sch.uk](mailto:year1a@westfield.staffs.sch.uk)



## **English**

In school we will:

- ⇒ Write predictions about stories.
- ⇒ Sequence well known fairy tales.
- ⇒ Retell familiar stories.
- ⇒ Use our imagination to innovate stories.
- ⇒ Write stories that are familiar to us.
- ⇒ Start to use adjectives in our writing.
- ⇒ Apply phonics when sounding out and count sounds in words.

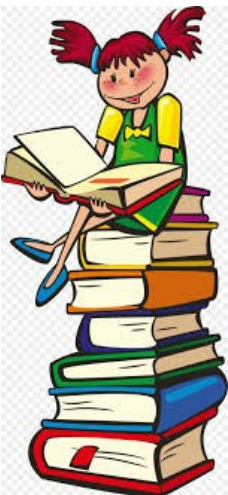
## **Maths**

In school we will:

- ◆ Sort objects in different ways.
- ◆ Count forwards and backwards within 10.
- ◆ Find one more and one less than for numbers to 10.
- ◆ Compare numbers and objects using greater than, less than and equal to.
- ◆ To order objects and numbers.

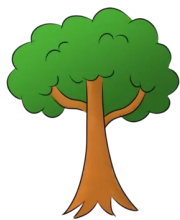
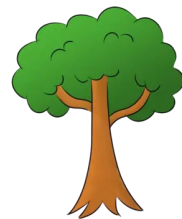
## **Reading at home**

- Your child will read their reading book three times in school as part of our Little Wandle phonics scheme and then bring it home to read to you.
- Every child will be able to choose a book from the library to take home every week and share with you.
- Library books will be changed on a Wednesday and reading books will be sent home on a Friday. Please return reading books on a Thursday.
- Please practise the phonics flashcards that will be sent home.



# Creative Theme

# Into The Forest



Our topic this half term will be 'Into The Forest', where we will be exploring the environment and learning about how to identify different trees and plants.

## Geography

As part of our wider curriculum we will be exploring different environments in the local area and learn about how to care for them. Using our map skills, we will recreate a map of Wombourne looking at symbols, direction and human and physical features.



## Art

Artists! Get ready to experiment with different pencil lines and thickness, develop control of pencil pressure and develop an understanding of continuous shapes to draw different leaves with detail.



## Science

As scientists we will explore and investigate the local environment looking at plants, animals and trees. Observing the weather and environments as the weeks go on relating them to the different seasons of the year. We will explore how the environment changes throughout the different seasons.



## RE

The theme this half term is caring. The children will explore how different people in our community help care for them.



## PSHE

Our theme for this half term is 'Me and my school'.

Children will have the opportunity to develop their personal skills, understand and contribute to the life of school. This will include gaining responsibilities within their classroom and the opportunity to apply to be a school council representative.



## French

Bonjour! This half term we will be learning about greetings in French.



As part of our topic, we have chosen a number of tasks for the children to complete at home. The children must complete at least one of these tasks but they can complete as many as they like! Children can email homework in at any time to the year group email address.

Create a poster or leaflet about the different plants, animals and trees found in forests. Take or draw pictures and add some information.	Look in your garden or in the outside area and try to spot flowers and plants. Can you research their names?
Go on a scavenger hunt in the forest. Take photos of the objects you find.	Draw a map of how you get to school. Include symbols, labels and pictures.
Create a picture or pattern using the natural objects you find on your scavenger hunt. Can you recreate a William Morris style picture?	Using your research of flowers, can you draw your favourite one, think about our learning of continuous lines.