

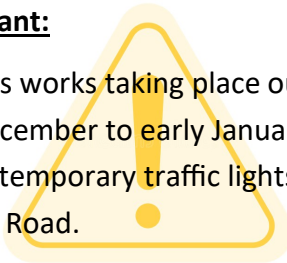
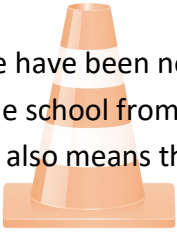


Friday 25th November 2022

Opening minds, shaping futures

Important:

We have been notified of gas works taking place outside school from w/c 5th December to early January. This also means there will be temporary traffic lights on Ounsdale Road.



Dates for your diary:

25th November—Wombourne Christmas lights
29th November—Braiswick Photographers
30th Nov/1st Dec—Christmas Performance (N/R)
6th & 7th Dec—Christmas Performance (Y1+Y2)
6th Dec—Flu Vaccination
13th Dec—Christmas lunch & Jumper day
14th Dec—Key Stage 2 Christmas at St Benedict's
15th Dec—Pantomime in School!

Our Christmas tree will be arriving next week as we start our Christmas festivities. From **1st December** children will be able to post their Christmas cards to be delivered around the classes. Please remember to put the child's first name and surname as well as their class if you can.



Flu Vaccinations:

The school immunisation team will be in school, Tuesday 6th December, to complete a catch-up flu vaccination session. Further information from the NHS will follow.



THANK YOU

We would like to say a huge thank you to **Claire Hill**, who has kindly volunteered to photograph our nursery, reception, Y1 and Y2 students for their Christmas performances.

Thank you Claire, your time and talent has been invaluable this last week!

Spell It Challenge:

4 pupils from Year 4 took part in the Spell It Challenge, Thursday 24th Nov, at Wolverhampton Girls' High School. In total, 27 teams took part and Westfield came.....

JOINT THIRD!!

Amazing work team!



KS2 Timetable Rockstars Battle of the Bands:

Each week, one class from each year group in KS2 participates in a competitive multiplication quiz, the group with the highest score wins!

Last weeks winners were:

Y3—Birch

Y4—Alder

Y5—Willow



Child Behaviour Direct

Do you want to know more about why your child behaves the way they do? If so, the '**Parents Guide to Children's Behaviour**' Programme is for you.

Following previous successful courses we will be delivering a six week programme in school, for parents of children in Nursery and Reception classes, starting week commencing **Monday 30th January 2023**, day and time to be arranged.

Please reply to this message if you would like to be booked on to the course.

Attendance

Attendance

Regular attendance in school has a direct impact on children's attainment and well-being.

If your child is unable to attend school due to illness, please call the office from 8.00am to inform us of your child's absence.

If you are planning a visit or holiday, it is important to remember that a holiday request form needs to be completed before the absence.

As a school we are not able to authorise holiday requests unless there are exceptional circumstances but the forms should still be completed. A family can be fined for taking children out of school during term time.

On a positive note we have had some great attendance since the start of term and would like to congratulate Alder with a near perfect 99.2%!

Class:	Percentage:
--------	-------------

Ash	96.3%
-----	-------

Elm	97.6%
-----	-------

Beech	88.9%
-------	-------

Yew	94.2%
-----	-------

Hazel	93.1%
-------	-------

Larch	85.3%
-------	-------

Maple	94.0%
-------	-------

Birch	93.8%
-------	-------

Alder	99.2%
-------	-------

Cedar	97.4%
-------	-------

Rowan	93.3%
-------	-------

Willow	98.2%
--------	-------

Sycamore	91.9%
----------	-------

Chestnut	98.4%
----------	-------



Families' Health and Wellbeing



Midlands Partnership
NHS Foundation Trust
A Keele University Teaching Trust

School Nurse virtual drop in clinic

Every
Thursday
from
3.30 - 4.30pm



Your School Nurse is here to help you feel healthy, happy and safe during your school years and to get the best from your education.

Join the link and talk to a School Nurse.

We provide a confidential and friendly service

mpft.live/schoolnurse



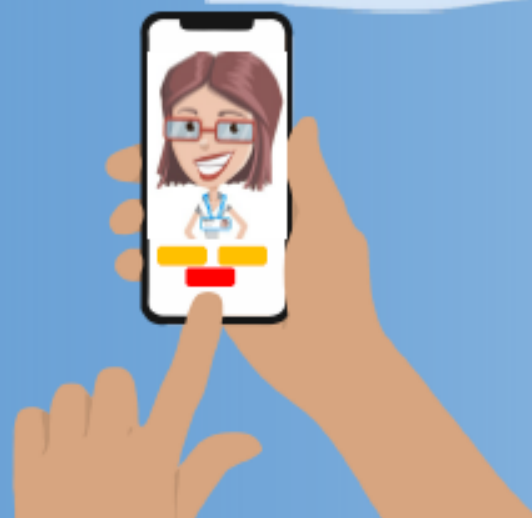
Families' Health and Wellbeing



Midlands Partnership
NHS Foundation Trust
A Keele University Teaching Trust

School Nurse virtual drop in clinic

Every
Thursday
from
3.30 - 4.30pm



The School Nurse is here to help your child feel healthy, happy and safe during their school years and to get the best from their education. If you have any concerns about their health and wellbeing please drop in to chat.

Join the link and talk to a School Nurse.

We provide a confidential and friendly service

mpft.live/schoolnurse

